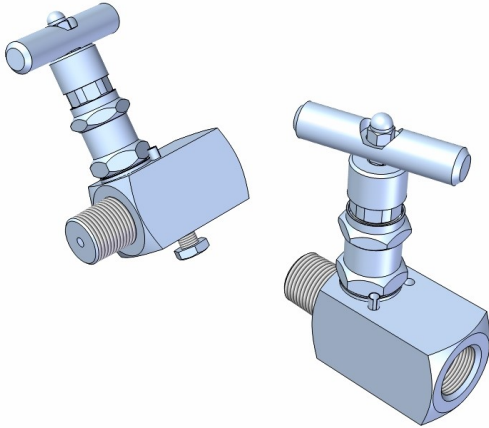


## Model GV02



### Design Features

- Self aligning metal seat
- Compact Design
- Non-rotating spindle tip
- Metal seal between body and bonnet
- Bonnet Locking pins
- Safety back seating T-Bar and Anti-Tamper operated valves
- Full traceability of all materials
- 100% pressure tested (1,5 x MWP)

### Description

#### **The Multi Instruments Gauge Valves**

The Multi Instruments gauge valve is a needle pattern valve with a non-rotating spindle tip, ensuring a positive bubble tight shut-off function.

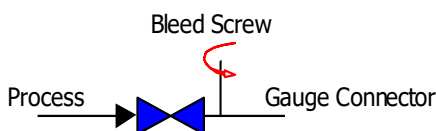
Standard valves in stainless steel are suitable for most process applications, however for severe applications, needle valves in "exotic" materials are available.

Maximum working pressure is 420 Bar (AISI316)  
Maximum temperature is 200°C (PTFE packing)

### Options

- Anti tamper facility with a removable T-bar key to prevent unauthorized operation of the valve.
- Sour Gas Service
- Oxygen Service
- Available in e.g. Monel, Hastelloy, Duplex, Super Duplex, Alloy 825, Alloy 625 materials.
- (NACE MR01-75 compliant)
- High temperature up to 450°C (Graphite packing)

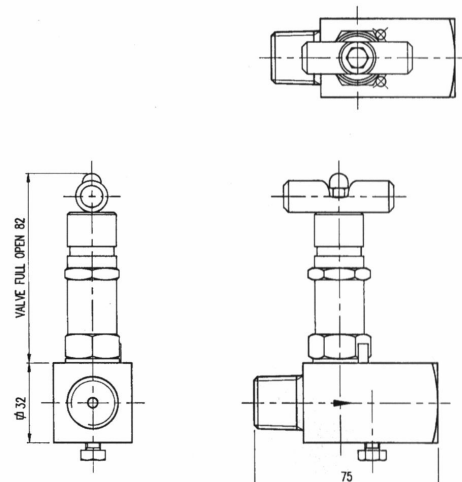
### Valve Diagram



### Connections

See ordering information on the back of this specification sheet for port connection types available.

### Valve Drawing



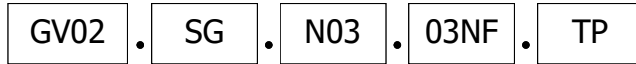
Head Office: ☎ +31 (0)183 62 88 88 or ✉ to: [instrumentation@multi-instruments.com](mailto:instrumentation@multi-instruments.com)

US + Canada: ☎ +1 587 269 49 88 or ✉ to: [solutions@multi-instruments.com](mailto:solutions@multi-instruments.com)

for additional information: 🌐 [www.multi-instruments.com](http://www.multi-instruments.com)

## Model GV02

### Model selection guide



#### Gauge Port Options

- .03NM 1/2" NPT male
- .03NF 1/2" NPT female
- .03BPM 1/2" BSP.P male
- .03BPF 1/2" BSP.P female
- .03DF 1/2" DIN16288 fem.

#### Valve Operation Mode

- .TP T-Bar PTFE
- .TG T-Bar Graphoil
- .AP Anti-Tamper PTFE
- .AG Anti-Tamper Graphoil

#### NOTES

\* PTFE <200°C, Graphite <450°C

#### Process Connector Options

- .N01 1/4" NPT male
- .N02 3/8" NPT male
- .N03 1/2" NPT male
- .N04 3/4" NPT male
  
- .BP01 1/4" BSP.P (G1/4") male
- .BP02 3/8" BSP.P (G3/8") male
- .BP03 1/2" BSP.P (G1/2") male

#### Valve Options

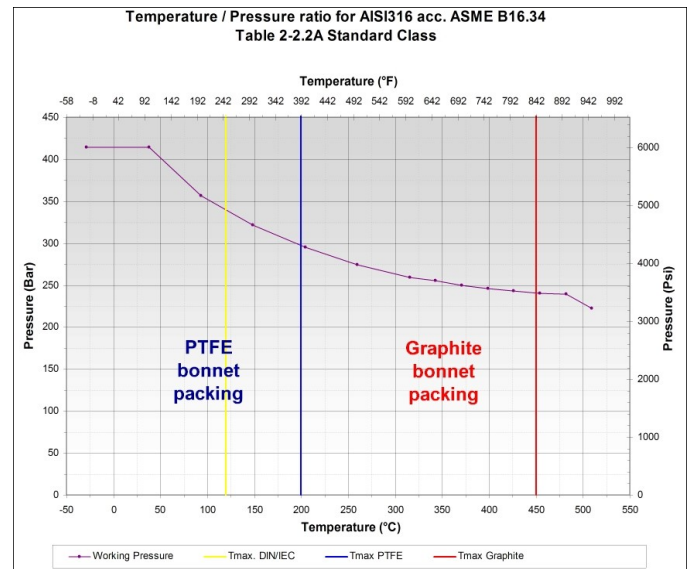
- .OS Oxygen Service
- .ST Stellite needle tip

#### Material (wetted parts):

- .SG AISI316/L NACE
- .M Alloy 400 (Monel)
- .H Alloy C276 (Hastelloy)
- .INC825 Alloy 825
- .INC625 Alloy 625
- .D Duplex
- .SD Super Duplex
- .6M0 254SMO / 6Mo
- Ti Titanium Gr.2

#### Model Description

- GV02 Gauge Valve Male-Female with internal bleed screw



Head Office: ☎ +31 (0)183 62 88 88 or ✉ to: [instrumentation@multi-instruments.com](mailto:instrumentation@multi-instruments.com)

US + Canada: ☎ +1 587 269 49 88 or ✉ to: [solutions@multi-instruments.com](mailto:solutions@multi-instruments.com)

for additional information: 🌐 [www.multi-instruments.com](http://www.multi-instruments.com)